



## Welcome to Newsletter 2 for the Proposed Residual Waste Treatment Facility (Recycling and Energy Recovery)

The intention of this newsletter is to inform you of where we are in our programme of consultation. We remain in the pre-application stage. We thought it would be useful for you, for us, to give an update and provide our feedback on some of the questions/issues that you have raised so far, please keep them coming.

### Toxic or not toxic - that is the question.

There is a body of opinion locally that is suggesting that the facility proposed will be a 'toxic waste incinerator', this is not the case. The facility proposed is a Residual Waste Treatment Facility. Residual wastes are those wastes that are left following the removal of materials that can be recovered for re-use or recycling such as the separation of bottles or paper by householders, or the removal of non-contaminated material such as paper and wood by businesses. Recovery of additional recyclate will be achieved as residual waste passes through the facility.



Located Close to the Proposed Site

Small proportions of residual waste will be accepted for energy recovery at the facility that may be classed as hazardous. Following tightening of waste regulations many wastes now classified as hazardous are suitable for energy recovery. Wastes such as oily rags, empty used containers, contaminated packaging could all be described as hazardous. It is these wastes that would be suitable for energy recovery at the proposed facility.

The waste types proposed for acceptance at the facility will be detailed fully in the application for a Pollution Prevention and Control Permit. This application is made to the Scottish Environment Protection Agency.

### So, the position so far...

In line with Scottish Government Guidance we embarked upon a programme of community consultation. In accordance with that programme we wrote to a number of local and national agencies such as Community Councils and the Scottish Environmental Protection Agency outlining our proposal.

These communications introduced both the outline of the proposal as well as the developer and offered an invitation to comment.

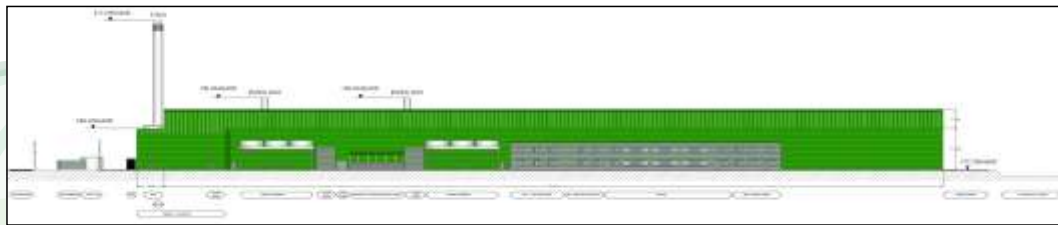


PROPOSED RESIDUAL WASTE TREATMENT FACILITY (RECYCLING & ENERGY RECOVERY)  
JUNE 2010 - NEWSLETTER 2

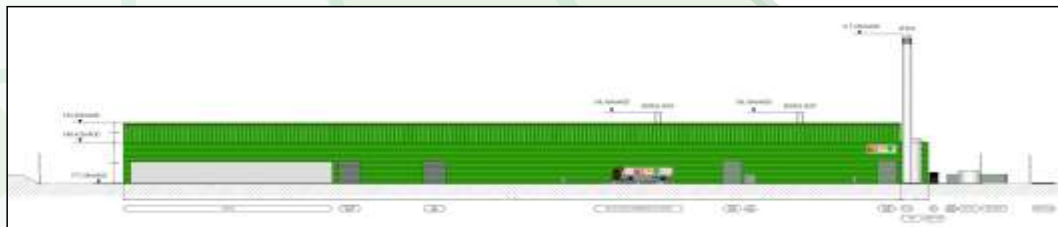
Awareness of the proposal has gathered momentum and a number of face-to-face meetings have been held with local residents who wished to speak with us directly.

From these meetings and the public exhibition we have received a significant amount of feedback. We've also received completed comments forms that we had made available with the No. 1 edition of the Newsletter. We would encourage continued contact to expand our consultee database and ensure that the widest public audience receives our updates.

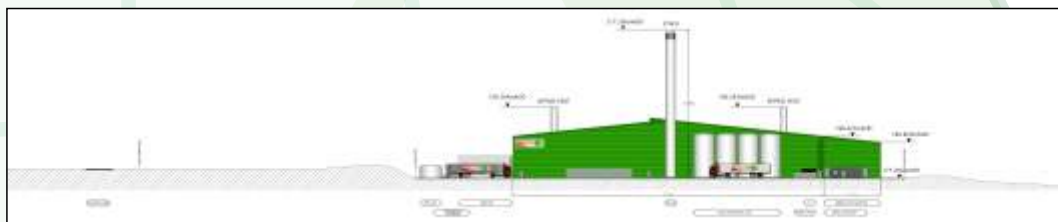
We are currently reviewing and assessing all the received comments. Given the amount of interest that the local community has shown in the proposals we are happy to extend this period. You can be assured that any new comments will be addressed regardless of when they are received.



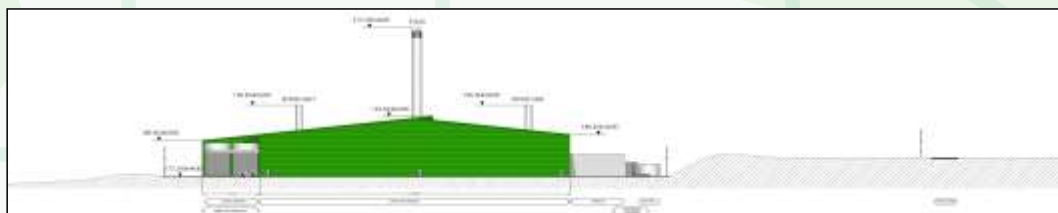
Proposed Western Building Elevation



Proposed Eastern Building Elevation



Proposed Northern Building Elevation



Proposed Southern Building Elevation



## Progress made so far...

As with any proposal that has the potential to impact upon people's lives a significant number of technical assessments must be undertaken. These assessments are undertaken to get a fuller understanding of the area and the existing environmental interactions that occur - these are called baseline assessments.

So far we have asked experts to investigate:

- Background Air Quality
- Existing Noise and Vibration Levels
- Current levels of traffic on the local highway network
- Local (ecological) biodiversity
- Quality of the surrounding Landscape
- Local Hydrology (groundwater and rivers/streams)
- Local Geology
- Local Archaeology

## Frequently Asked Questions

From the feedback received so far it is clear that there are common questions arising. Below are the answers to a number of frequently asked questions:

### *Has an application been submitted yet?*

No application has been made to South Lanarkshire Council. This is a pre-application period. During the pre-application period various technical assessments are being carried out and the planning application prepared. Future newsletters will outline when an application has been made and what period of advertisement and consultation response is required.

### *Will emissions from the facility be safe?*

There will be emissions from the facility. Potential impacts to air quality will be assessed as part of the preparation of the planning application. Whilst further details will be presented in the application documents, we must be able to demonstrate that any emissions are well within strict environmental limits. These controls will be regulated by the Scottish Environment Protection Agency.



Flue Stack and ancillary equipment at the Dumfries Facility



Proposed Site off Carlisle Road

*Why have you chosen this site to build the facility?*

Proximity is a major principle of sustainability. Being located geographically central to the administrative area of South Lanarkshire it is well placed to serve the needs of the identified market area. Furthermore, there are residual wastes produced (and currently disposed of to landfill) close to this location. The facility is placed so it can capture a proportion of this residual waste.

*How many extra vehicles will the facility bring to local roads?*

The facility will increase the number of vehicle movements to and from the site. The impact of these vehicle movements will be assessed as part of the Traffic Impact Assessment currently being developed. Current estimates are that 77 additional commercial movements per day will be generated.

*Are you aware that a gas main runs in close proximity to the site?*

Yes, the layout of the site as proposed will allow for a 'stand off' from this gas main as required by Scotland Gas Networks.

## Next Steps

Once we have received all of your comments we shall review and consider how they maybe incorporated into the design and development process. We anticipate a broad spectrum of comments to which we'll prepare a report into how we considered these. This report will be submitted with the planning application.

There will be a continued programme of consultation. This will be largely conducted through these newsletters or through contact with the Local Community Councils.

A dedicated webpage for the proposed facility is currently under construction and will be arriving shortly. This page will provide the latest information on the proposal, useful contact information and links to other helpful sites. A back catalogue of past issues of communications will also be provided. A link to the page will be provided as soon as possible.

By way of reminder our contact details are:

Lloyd Brotherton on 07984 494 609 (l.brotherton@ascotenv.co.uk), or

Stratus Environmental Ltd on 0113 2328571 (info@stratus-environmental.co.uk)

Please feel free to give us your postal address or e-mail so that you can be assured of receiving future factual information.